



Page: 14A-2

Page: 14D-1

NAME	BA		STRUCTURE		BM										HBFO					HO	Re-Entry	FIBER RUS Code, Size, Length	CONDUIT		COMMENTS		
	3	4	TYPE	SUFFIX	2 <small>(5/8) (6)</small>	53	53A	61(3)	72	73	83	OP	TRUCK	24	48	72	96	144	192				288	RUS		Suffix	Length
14A/1			BDO5	(AGS)																				BFO48 - 1082'			

LE4 - Iris Rd - LTF

Staked By:
Revised By:
As Built By:
ROW Width:

0 70 140 Feet

Prepared by:
CTC 218-454-1234
4/2/2026



NAME	BA		STRUCTURE		BM								HBFO								HO	Re-Entry	FIBER	CONDUIT		COMMENTS
	3	4	TYPE	SUFFIX	2 <small>(5/8)/61</small>	53	53A	61(3)	72	73	83	OP	TRUCK	24	48	72	96	144	192	288				RUS Code, Size, Length	RUS Suffix Length	
14A5B/1			BDO5	(AGS)																			BFO24 - 1700'	BM60(1)(1.25) 300'		
14A5B/2			BDO5	(AGS)																			BFO24 - 902'			

LE4 - Iris Rd - LTF

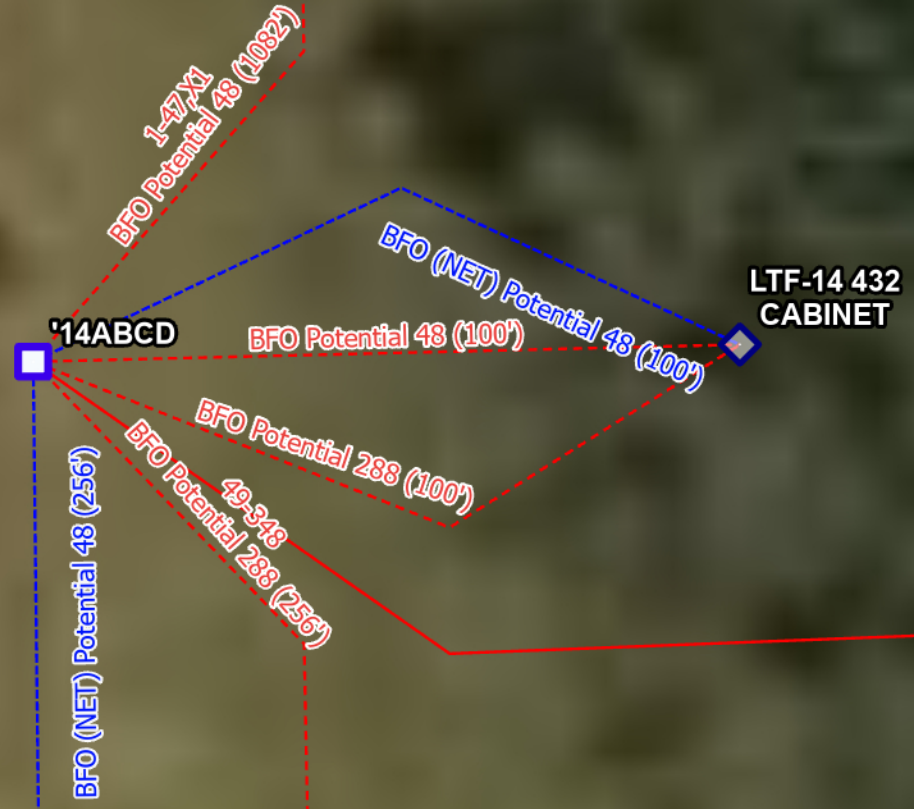
Staked By:
Revised By:
As Built By:
ROW Width:

0 160 320 Feet

Prepared by:
CTC 218-454-1234
4/2/2026



Iris Rd



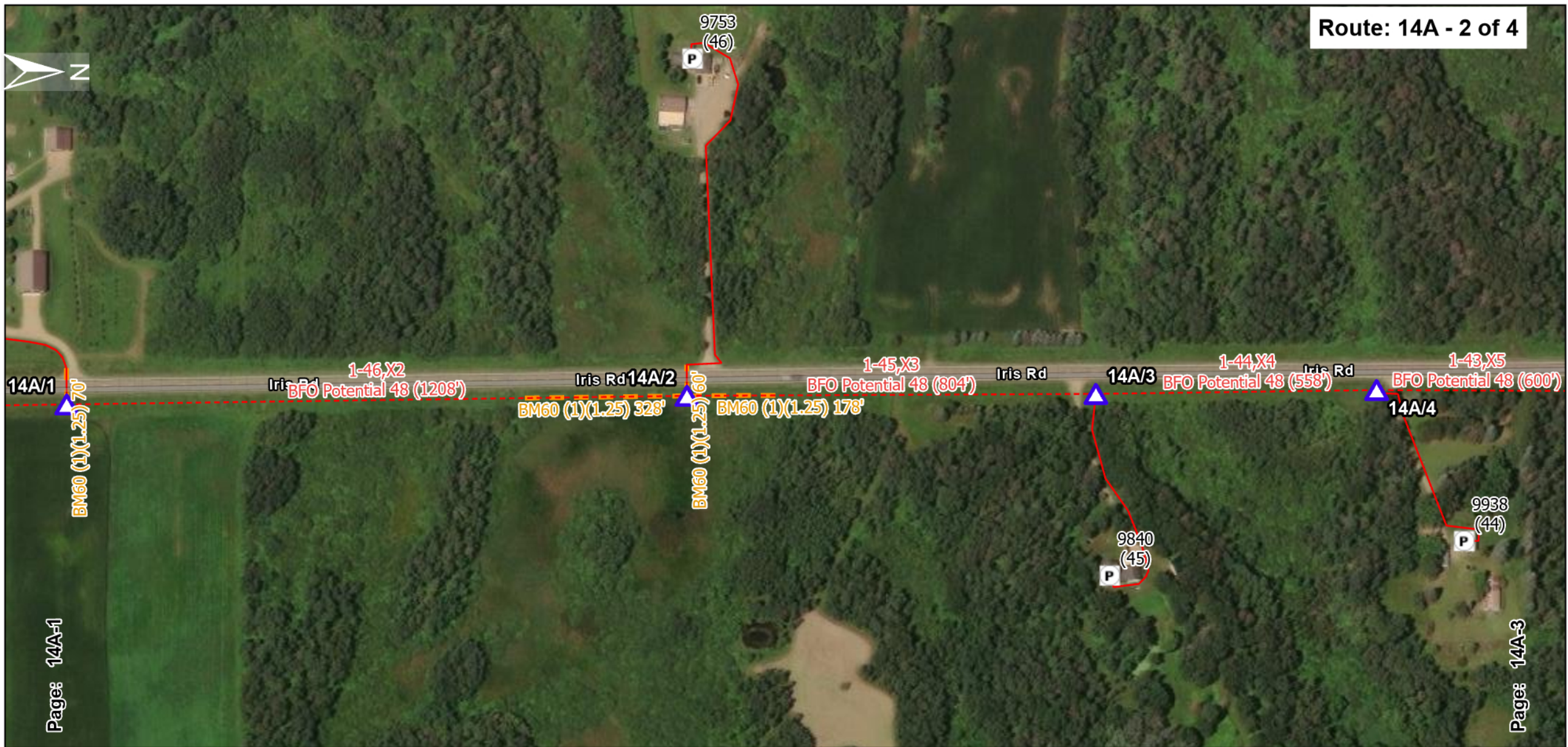
NAME	BA		STRUCTURE		BM										HBFO						HO	Re-Entry	FIBER RUS Code, Size, Length	CONDUIT			COMMENTS							
	3	4	TYPE	SUFFIX	2 (5/8) (6)	53	53A	61(3)	72	73	83	OP	TRUCK	24	48	72	96	144	192	288				RUS	Suffix	Length								
'14ABCD			BHF	(G) (36x60x36)	T																													
LTF-14 432 CABINET			BHF	(G)																												BFO48 - 100'		
LTF-14 432 CABINET																																	BFO288 - 100'	
LTF-14 432 CABINET																																	BFO (NET)48 - 100'	

LE4 - Iris Rd - LTF

Staked By:
Revised By:
As Built By:
ROW Width:

0 4 8 Feet

Prepared by:
CTC 218-454-1234
4/2/2026



Page: 14A-1

Page: 14A-3

NAME	BA		STRUCTURE		BM										HBFO								HO	Re-Entry	FIBER RUS Code, Size, Length	CONDUIT RUS Suffix Length	COMMENTS
	3	4	TYPE	SUFFIX	2 (5/8) (6)	53	53A	61(3)	72	73	83	OP	TRUCK	24	48	72	96	144	192	288							
14A/2			BDO5	(AGS)																				BFO48 - 1208'	BM60(1)(1.25) 328'		
14A/3			BDO5	(AGS)																				BFO48 - 804'	BM60(1)(1.25) 178'		
14A/4			BDO5	(AGS)																				BFO48 - 558'			

LE4 - Iris Rd - LTF

Staked By:
Revised By:
As Built By:
ROW Width:

0 160 320 Feet

Prepared by:
CTC 218-454-1234
4/2/2026



Page: 14D-1

Page: 14D-3

NAME	BA		STRUCTURE		BM								HBFO							HO	Re-Entry	FIBER	CONDUIT			COMMENTS	
	3	4	TYPE	SUFFIX	2 <small>(5/8)/61</small>	53	53A	61(3)	72	73	83	OP	TRUCK	24	48	72	96	144	192				288	1	RUS Code, Size, Length		RUS Suffix
14D/3																									BFO144 - 774'	BM60(2)(1.25) 50'	
14D/4			BHF	(G) (30x48x36)T																					BFO144 - 2184'	BM60(2)(1.25) 152'	
14D/4																									BFO (NET)48 - 4006'		

LE4 - Iris Rd - LTF

Staked By:
Revised By:
As Built By:
ROW Width:

0 165 330 Feet

Prepared by:
CTC 218-454-1234
4/2/2026



Page: 14D-2

Page: 14D-4

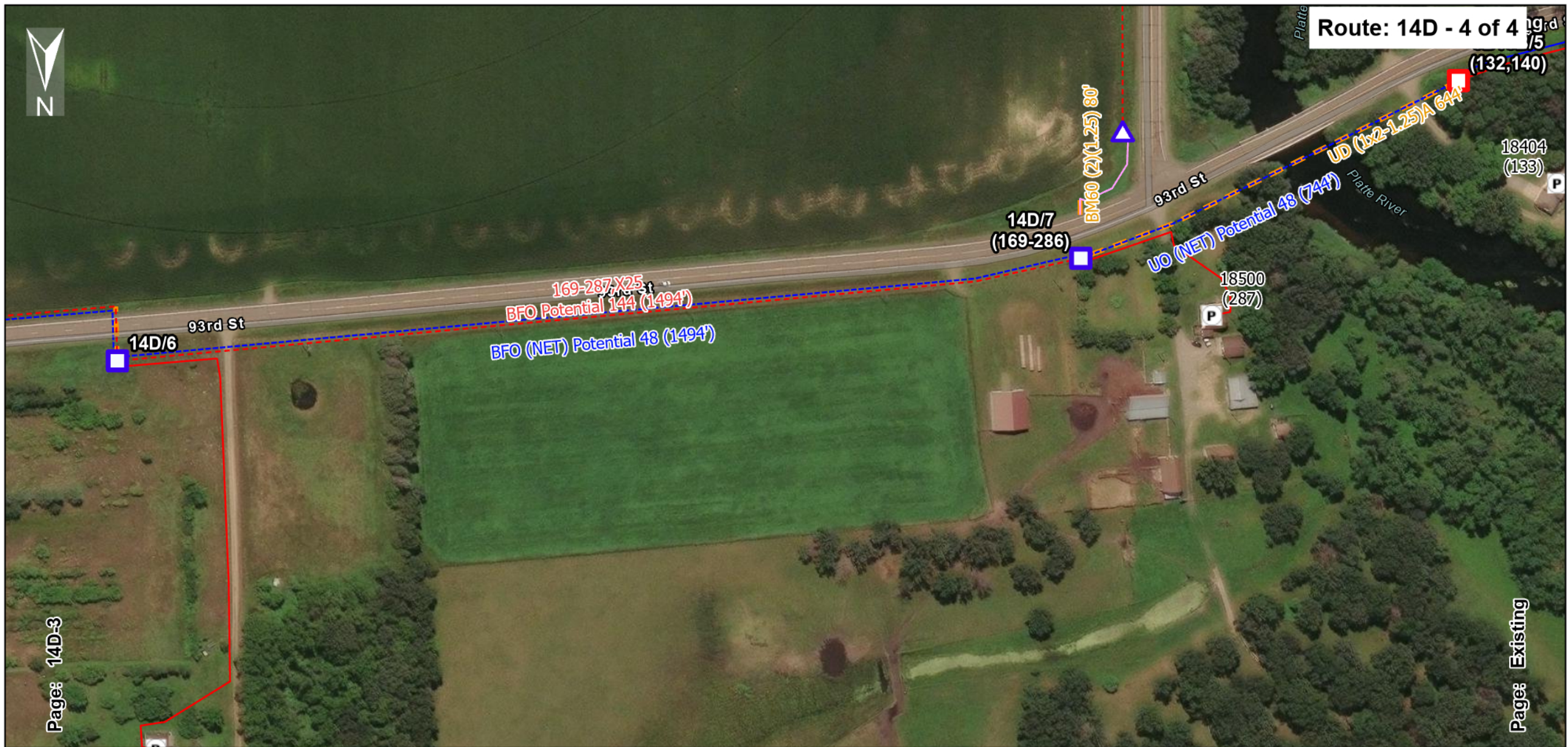
NAME	BA		STRUCTURE		BM										HBFO								HO	Re-Entry	FIBER RUS Code, Size, Length	CONDUIT RUS Suffix Length	COMMENTS		
	3	4	TYPE	SUFFIX	2 (5/8)/61	53	53A	61(3)	72	73	83	OP	TRUCK	24	48	72	96	144	192	288	1								
14D/5			BDO5	(AGS)																							BFO144 - 1304'	BM60(2)(1.25) 368'	
14D/6			BDO5	(AGS)																							BFO144 - 1254'	BM60(2)(1.25) 80'	
14D/6																											BFO (NET)48 - 2708'		

LE4 - Iris Rd - LTF

Staked By:
Revised By:
As Built By:
ROW Width:

0 150 300 Feet

Prepared by:
CTC 218-454-1234
4/2/2026



Page: 14D-3

Page: Existing

NAME	BA		STRUCTURE		BM								HBFO								HO	Re-Entry	FIBER	CONDUIT			COMMENTS
	3	4	TYPE	SUFFIX	2 (5/8)/61	53	53A	61(3)	72	73	83	OP	TRUCK	24	48	72	96	144	192	288				RUS Code, Size, Length	RUS Suffix	Length	
14D/7	1		BHF	(30x48x36)T	1		1													1		BFO144 - 1494'					
14D/7																						BFO (NET)48 - 1494'					
Existing 3B18B/5			BHF	(30x48x36)T																		UO (NET)48 - 744'	UD(1x2-1.25)A 644'				

LE4 - Iris Rd - LTF

Staked By:
Revised By:
As Built By:
ROW Width:

0 120 240 Feet

Prepared by:
CTC 218-454-1234
4/2/2026



Page: 14A-3

NAME	BA		STRUCTURE		BM										HBFO								HO	Re-Entry	FIBER RUS Code, Size, Length	CONDUIT RUS Suffix Length	COMMENTS			
	3	4	TYPE	SUFFIX	2 (5/8)/61	53	53A	61(3)	72	73	83	OP	TRUCK	24	48	72	96	144	192	288										
14A/7			BDO5	(AGS)																								BFO24 - 834'	BM60(1)(1.25) 78'	
14A/8			BDO5	(AGS)																								BFO24 - 1014'		

LE4 - Iris Rd - LTF

Staked By:
Revised By:
As Built By:
ROW Width:

0 160 320 Feet

Prepared by:
CTC 218-454-1234
4/2/2026