



NAME	BA		STRUCTURE		BM										HO	Re-Entry	FIBER	CONDUIT		COMMENTS		
	3	4	TYPE	SUFFIX	2 (3/8)/61	53	53A	61(3)	72	73	83	OP	TRUCK	24				48	72		96	144
COC5C/1	1		BDO5	(AGS)	1		1														BFO48 - 804'	BM60(1)(1.25) 200'
COC5C/2																					UO48 - 1042'	UD(1x1-1.25)A 1022'

LE4 -Haven Rd - LTF

Staked By:  
Revised By:  
As Built By:  
ROW Width:

0 120 240 Feet

Prepared by:  
CTC 218-454-1234  
4/2/2026

Page: Existing

Page: COC5C-2



1208  
0

Page: COC5C-1

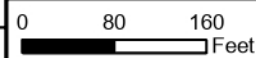
Page: COC5C-3

NAME	BA		STRUCTURE		BM								HBFO								HO	Re-Entry	FIBER RUS Code, Size, Length	CONDUIT RUS Suffix Length	COMMENTS					
	3	4	TYPE	SUFFIX	2 <small>(3/8)/61</small>	53	53A	61(3)	72	73	83	OP	TRUCK	24	48	72	96	144	192	288										
COC5C/3	1		BDO5	(AGS)	1		1																					BFO48 - 990'	BM60(1)(1.25) 308'	
COC5C/4	1		BDO5	(AGS)	1		1																					BFO48 - 444'	BM60(1)(1.25) 316'	

LE4 -Haven Rd - LTF



Staked By:  
Revised By:  
As Built By:  
ROW Width:



Prepared by:  
CTC 218-454-1234  
4/2/2026



Page: COC5C-2

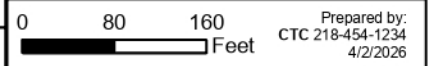
Page: COC5C-4

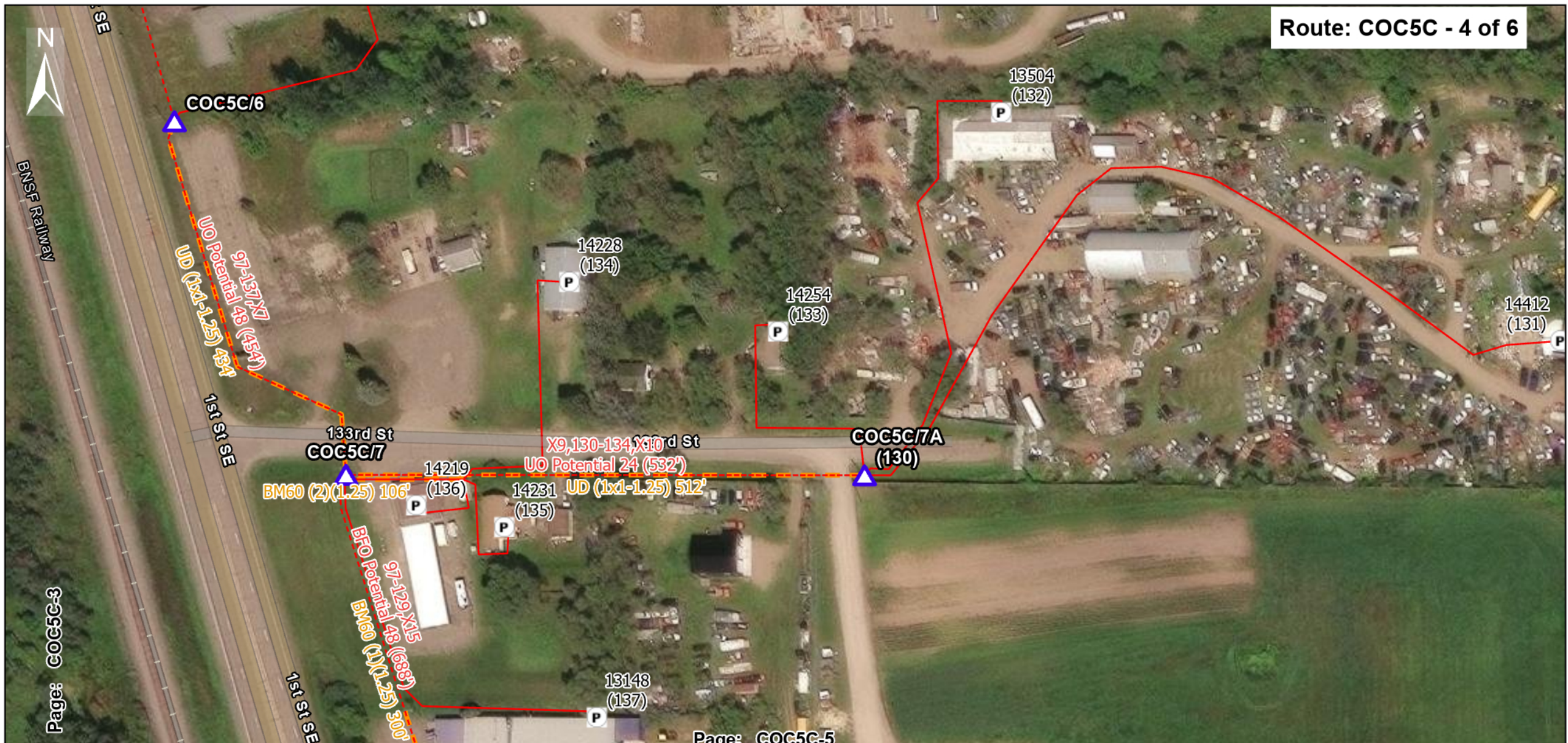
NAME	BA		STRUCTURE		BM								HBFO								HO	Re-Entry	FIBER RUS Code, Size, Length	CONDUIT RUS Suffix Length	COMMENTS
	3	4	TYPE	SUFFIX	2 (5/8)/61	53	53A	61(3)	72	73	83	OP	TRUCK	24	48	72	96	144	192	288					
COC5C/5	1		BDO5	(AGS)	1		1													1		BFO48 - 370'	BM60(1)(1.25) 84'		
COC5C/6	1		BDO5	(AGS)	1		1															BFO - 390'	BM60(1)(1.25) 100'		

LE4 -Haven Rd - LTF



Staked By:  
Revised By:  
As Built By:  
ROW Width:





NAME	BA		STRUCTURE		BM										HBFO								HO	Re-Entry	FIBER RUS Code, Size, Length	CONDUIT RUS Suffix Length	COMMENTS			
	3	4	TYPE	SUFFIX	2 (5/8) (6)	53	53A	61(3)	72	73	83	OP	TRUCK	24	48	72	96	144	192	288										
COC5C/7	1		BDO5	(AGS)	1	1																					UO48 - 454'	UD(1x1-1.25) 434'		
COC5C/7A	1		BDO5	(AGS)	1	1																					UO24 - 532'	UD(1x1-1.25) 512'		

LE4 -Haven Rd - LTF

Staked By:  
Revised By:  
As Built By:  
ROW Width:

0 80 160 Feet

Prepared by:  
CTC 218-454-1234  
4/2/2026



Page: COC5C-4

Page: COC5C-6

NAME	BA		STRUCTURE		BM								HBFO						HO	Re-Entry	FIBER	CONDUIT		COMMENTS
	3	4	TYPE	SUFFIX	2 (5/8/6)	53	53A	61(3)	72	73	83	OP	TRUCK	24	48	72	96	144				192	288	
COC5C/8	1		BDO5	(AGS)	1		1														BFO48 - 688'	BM60(1)(1.25) 300'		
COC5C/9	1		BDO5	(AGS)	1		1														BFO48 - 824'	BM60(1)(1.25) 268'		

LE4 -Haven Rd - LTF

Staked By:  
Revised By:  
As Built By:  
ROW Width:

0 120 240 Feet

Prepared by:  
CTC 218-454-1234  
4/2/2026



Page: COC5C-5

NAME	BA		STRUCTURE		BM								HBFO						HO	Re-Entry	FIBER	CONDUIT	COMMENTS						
	3	4	TYPE	SUFFIX	2 <small>(5/8)/61</small>	53	53A	61(3)	72	73	83	OP	TRUCK	24	48	72	96	144						192	288				
COC5C/10	1		BDO5	(AGS)	1		1																				BFO48 - 768'	BM60(1)(1.25) 110'	
COC5C/11	1		BDO5	(AGS)	1		1																				BFO48 - 598'	BM60(1)(1.25) 324'	

LE4 -Haven Rd - LTF

Staked By:  
Revised By:  
As Built By:  
ROW Width:

0 80 160 Feet

Prepared by:  
CTC 218-454-1234  
4/2/2026