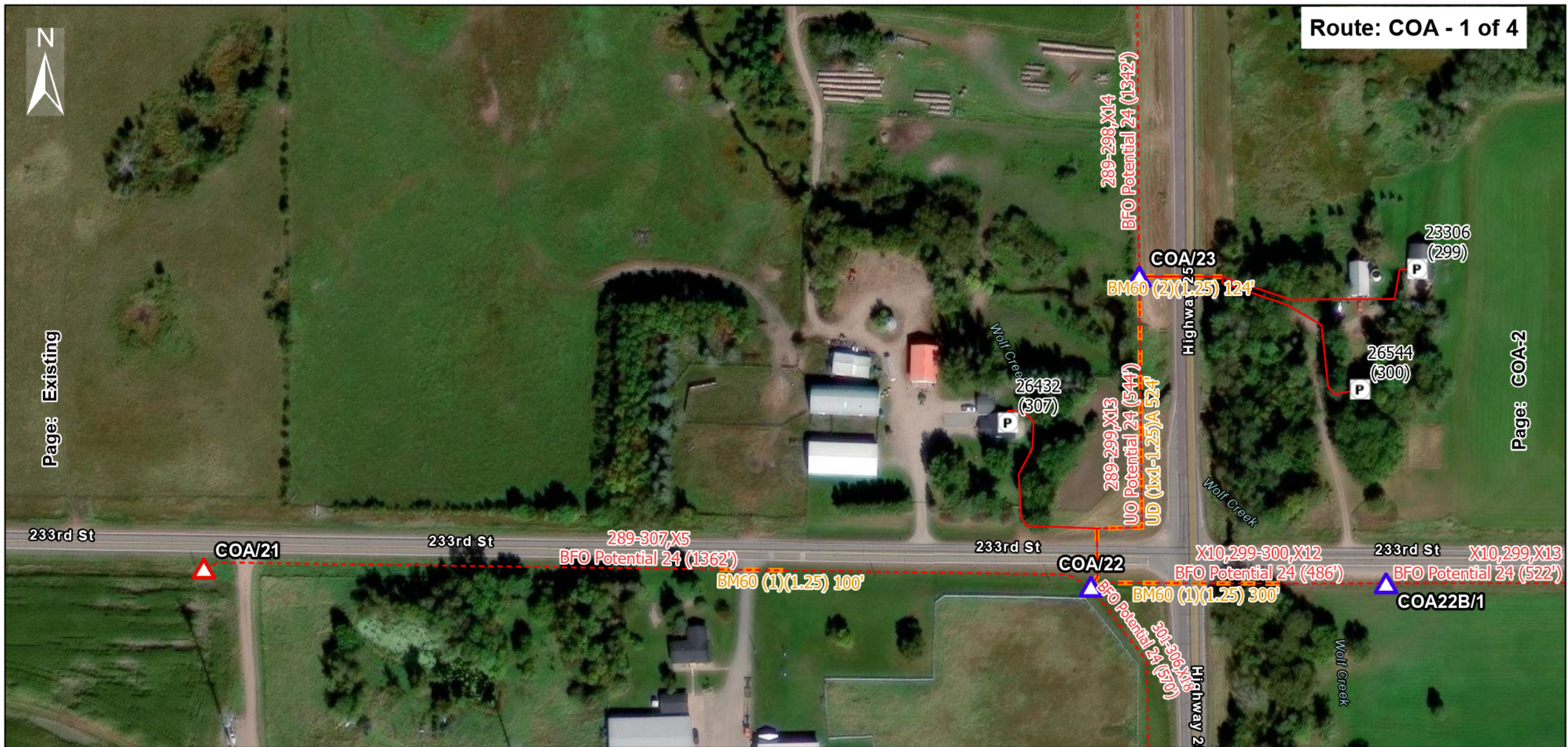




Page: Existing

Page: COA-2



NAME	BA		STRUCTURE		BM								HBFO								HO	Re-Entry	FIBER	CONDUIT		COMMENTS
	3	4	TYPE	SUFFIX	2 (5/8)/61	53	53A	61(3)	72	73	83	OP	TRUCK	24	48	72	96	144	192	288				RUS Code, Size, Length	RUS Suffix Length	
COA/22	1		BDO5	(AGS) Other	1		1													1		BFO24 - 1362'	BM60(1)(1.25) 100'			
COA/23	1		BDO5	(AGS) Other	1		1													1		UO24 - 544'	UD(1x1-1.25)A 524'			

LE4 - 233rd St - Freedhem

Staked By:
Revised By:
As Built By:
ROW Width:

0 120 240 Feet

Prepared by:
CTC 218-454-1234
3/25/2026



NAME	BA		STRUCTURE		BM								HBFO								HO	Re-Entry	FIBER	CONDUIT			COMMENTS		
	3	4	TYPE	SUFFIX	2 (5/8/6)	53	53A	61(3)	72	73	83	OP	TRUCK	24	48	72	96	144	192	288				RUS Code, Size, Length	RUS	Suffix		Length	
COA/24	1		BDO5	(AGS) Other	1		1													1					BFO24 - 1342'				
COA/25	1		BDO5	(AGS) Other	1		1													1					BFO24 - 978'				
COA/26	1		BDO5	(AGS) Other	1		1													1					BFO24 - 758'				

LE4 - 233rd St - Freedhem



Staked By:
Revised By:
As Built By:
ROW Width:



NAME	BA		STRUCTURE		BM								HBFO								HO	Re-Entry	FIBER RUS Code, Size, Length	CONDUIT			COMMENTS
	3	4	TYPE	SUFFIX	2 (5/8)/61	53	53A	61(3)	72	73	83	OP	TRUCK	24	48	72	96	144	192	288				RUS	Suffix	Length	
COA/27	1		BDO5	(AGS) Other	1		1													1			BFO24 - 864'				
COA/27A	1		BDO5	(AGS) Other	1		1													1			BFO24 - 1690'				
COA/28			BDO5	(AGS)																			BFO24 - 440'			BM60(2)(1.25) 120'	

LE4 - 233rd St - Freedhem

Staked By:
Revised By:
As Built By:
ROW Width:

0 205 410 Feet

Prepared by:
CTC 218-454-1234
3/25/2026

