



NAME	BA		STRUCTURE		BM										HBFO	HO	Re-Entry	FIBER	CONDUIT			COMMENTS						
	3	4	TYPE	SUFFIX	2	53	53A	61(3)	72	73	83	OP	TRUCK	24					48	72	96		144	192	288	1	RUS Code, Size, Length	RUS
10D4D7C/1			BDO5	(AGS)																						UO24 - 1394'	UD(1x1-1.25)A 1334'	
10D4D7C/2			BDO5	(AGS)																						BFO24 - 1090'		
10D4D7C/3			BDO5	(AGS)																						BFO24 - 568'		
10D4D7C/4			BDO5	(AGS)																						BFO - 1128'		
10D4D7C/5			BHF	(AGS) (30x48x36)T																						BFO24 - 1366'		

LE4 190th St - LTF

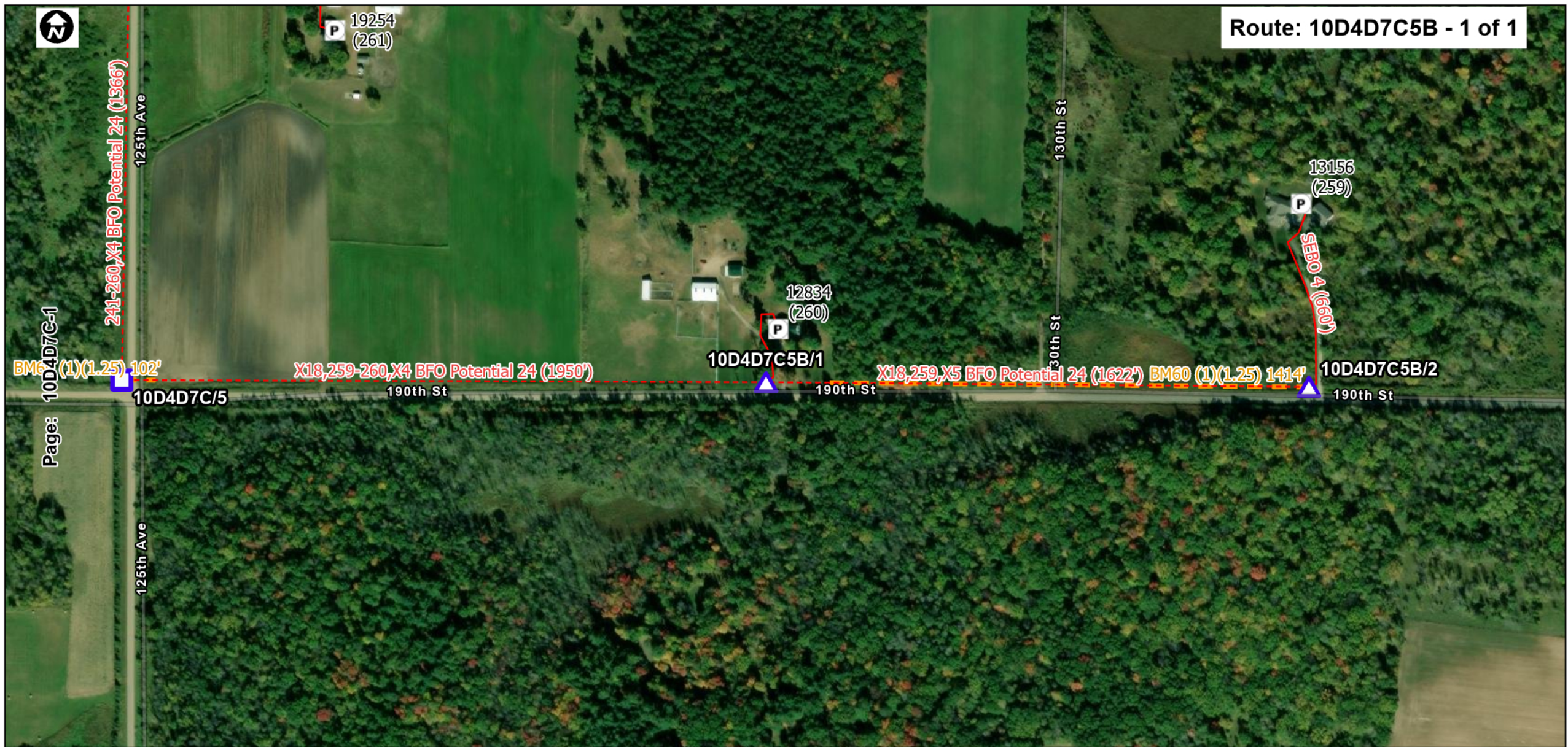
Staked By:
Revised By:
As Built By:
ROW Width:

0 370 740 Feet

Prepared by:
CTC 218-454-1234
3/20/2026

Page: 10D4D-1

Page: 10D4D7C5B-1



NAME	BA		STRUCTURE		BM										HBFO					HO	Re-Entry	FIBER	CONDUIT			COMMENTS				
	3	4	TYPE	SUFFIX	2	53	53A	61(3)	72	73	83	OP	TRUCK	24	48	72	96	144	192				288	1	RUS Code, Size, Length		RUS	Suffix	Length	
10D4D7C5B/1			BDO5	(AGS)																						BFO24 - 1950'	BM60(1)(1.25)	102'		
10D4D7C5B/2			BDO5	(AGS)																						BFO24 - 1622'	BM60(1)(1.25)	1414'		

LE4 190th St - LTF

Staked By:
Revised By:
As Built By:
ROW Width:

0 250 500 Feet

Prepared by:
CTC 218-454-1234
3/20/2026

Page: 10D4D7C-1

